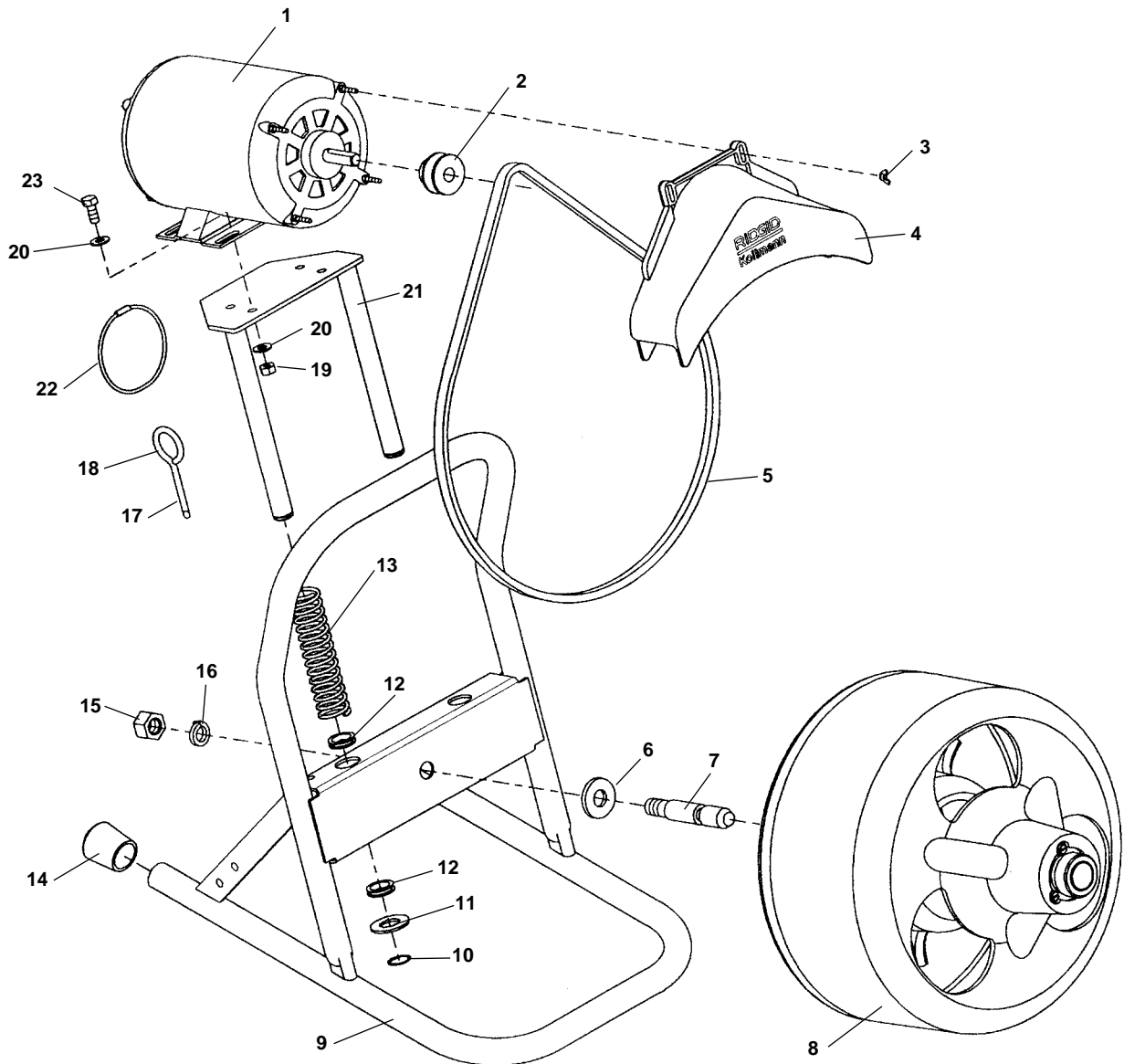


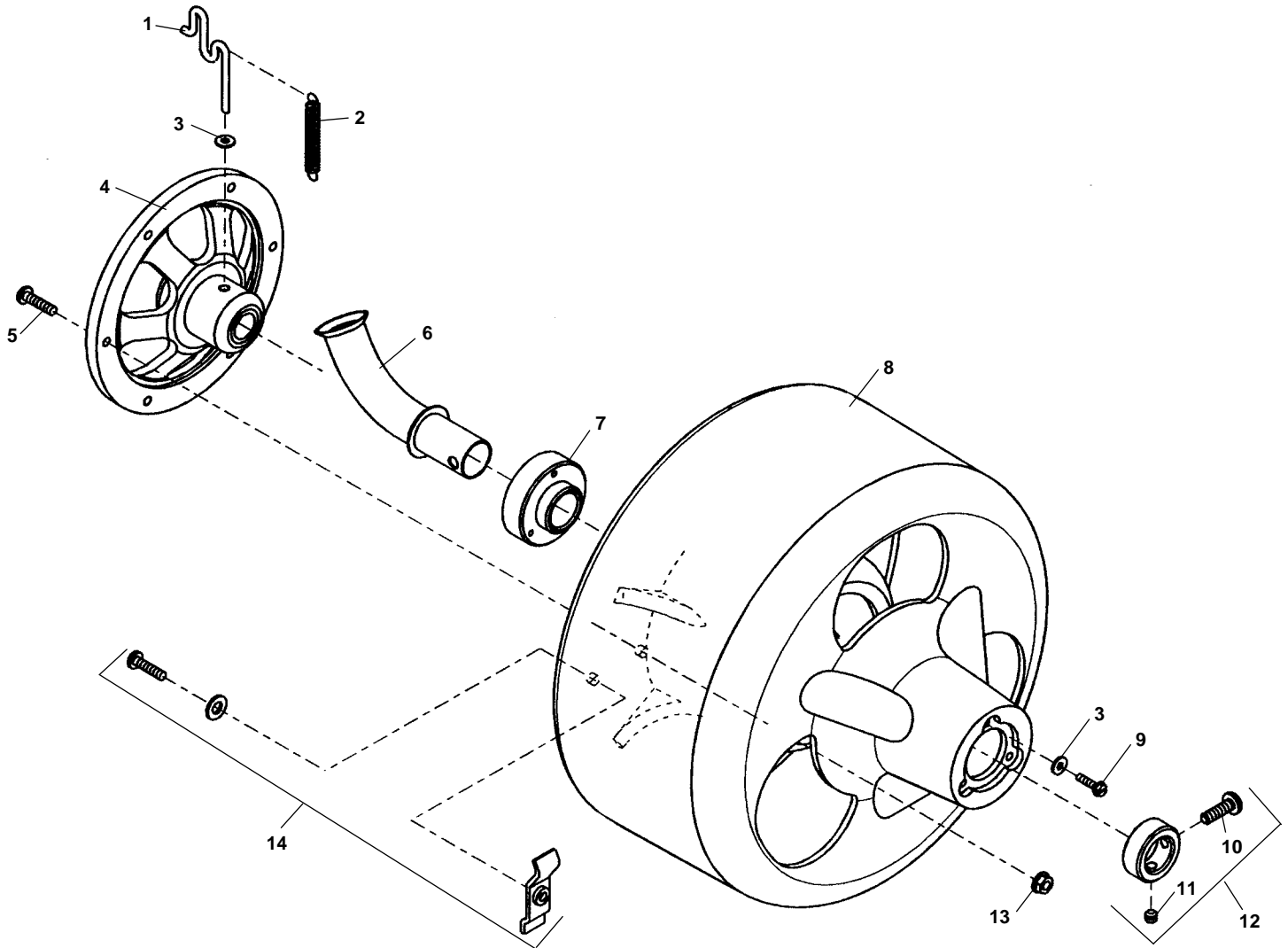
Main Components



**NOTE: Order parts by Catalog Number Only.
DO NOT order by Reference Number.**

Ref. No.	Catalog No.	Description	Ref. No.	Catalog No.	Description
1	37977	Motor Assembly 120V 60Hz	12	37952	Nylon Grommet (4)
	44702	Motor 220/240V 50Hz Export	13	37957	Spring (2)
	44712	Motor 220/240V 50Hz Europe	14	37962	Rubber End Cap (2)
2	33082	Motor Pulley	15	13617	Hex Nut 5/8" - 11
3	39557	Wing Nut (2)	16	46682	Lock Washer 5/8"
4	39767	Belt Guard	17	59230	3/8" Cable Pin Key
5	37872	Drive Belt	18	59225	1/2" Cable Pin Key
6	47077	Drum Axle Washer	19	96730	Hex Nut 5/16" - 18 (4)
7	37937	Drum Axle	20	96740	Flat Washer 5/16" (4)
8	37787	Drum Assembly	21	33087	Motor Mount
9	37942	Frame	22	54562	Tool Holder
10	37947	Spiral Ring (2)	23	61130	Hex Bolt
11	37897	Nylon Washer (2)			

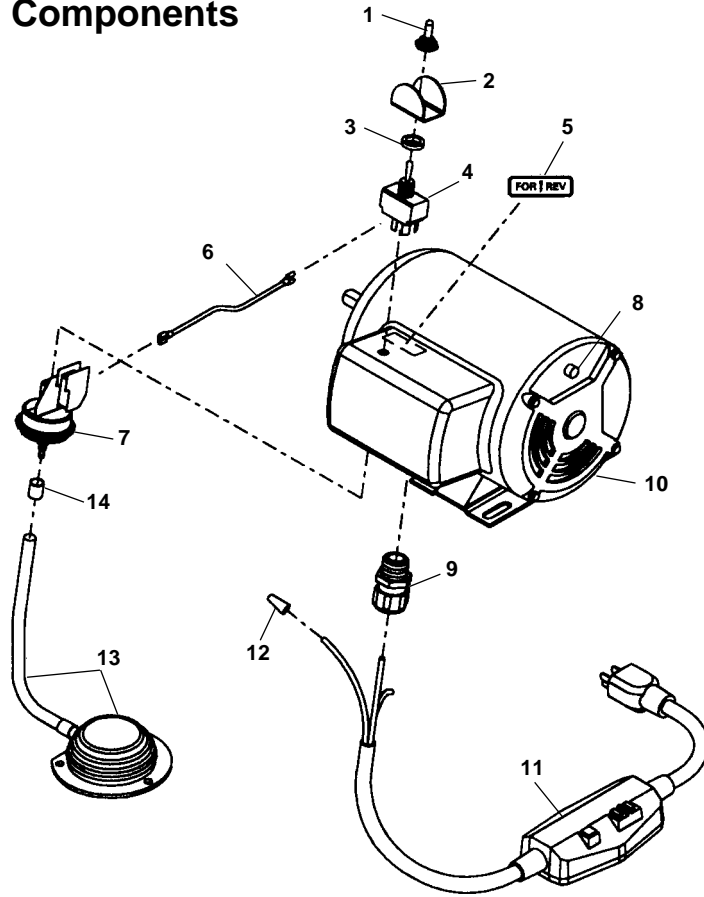
Drum Assembly



**NOTE: Order parts by Catalog Number Only.
DO NOT order by Reference Number.**

Ref. No.	Catalog No.	Description	Ref. No.	Catalog No.	Description
—	37787	Drum Assembly	8	37892	Drum
1	44872	Drum Retainer	9	37907	Slotted Hex Screw #10 x 3/4" (3)
2	37882	Retainer Spring	10	39582	Set Screw 5/16" - 18 x 1"
3	45365	#10 Flat Washer (4)	11	46080	Set Screw CP 5/16" - 18 x 1/2"
4	37927	Drum Hub	12	37912	Set Collar Assembly
5	37932	Cinch Stud 1/4" - 20 x 1" (6)	13	47297	Flange Nut 1/4" - 20 (6)
6	37922	Guide Tube	14	50207	Cable Clamp Assembly
7	37917	Sleeve Bushing			

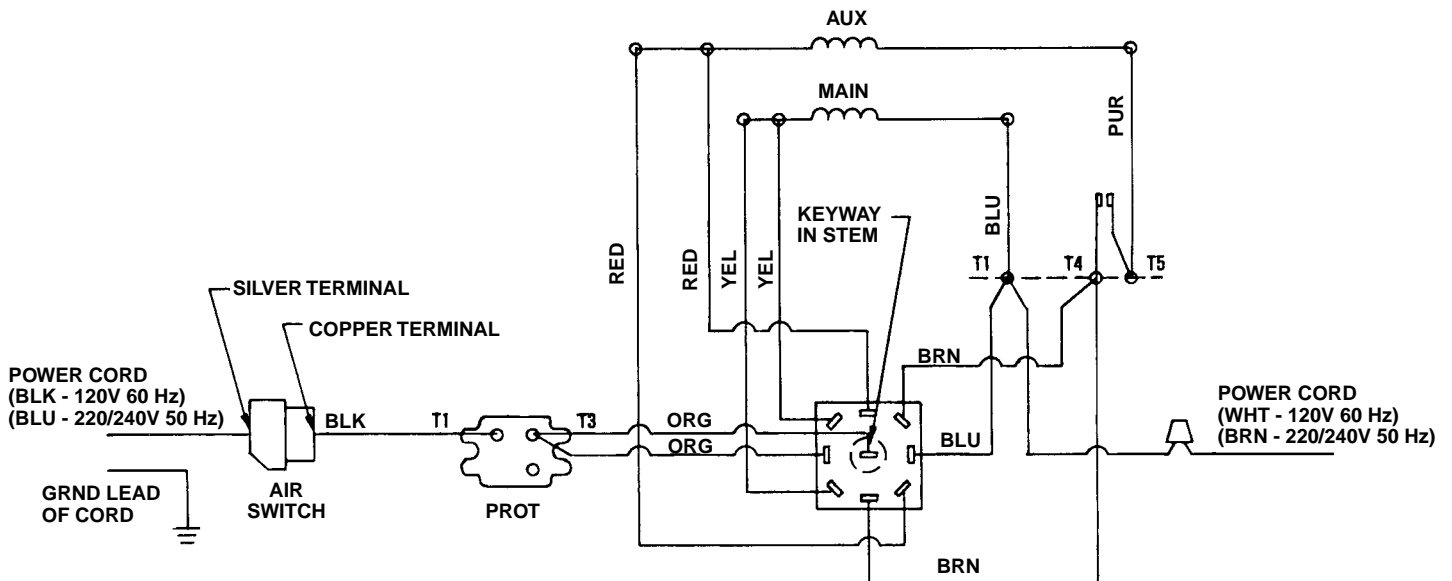
Electrical Components



**NOTE: Order parts by Catalog Number Only.
DO NOT order by Reference Number.**

Ref. No.	Catalog No.	Description
1	23507	Rubber Boot
2	61490	Switch Guard
3	23512	Rubber Washer
4	41817	Switch
5	23687	FOR/REV Label
6	44877	Lead Wire Assembly
7	32992	Air Switch
8	67412	Thermal Overload
9	96265	Strain Relief
10	37977	120V 60Hz Motor Assembly (Includes Ref. No. 1 - 9)
	44702	220/240V 50Hz Motor Assy. (Includes Ref. No. 1-9)
11	50507	120V Power Cord w/GFCI
	15707	220V Power Cord
12	44635	Wire Nut
13	37967	Foot Switch Assembly
14	35142	Hose Clamp

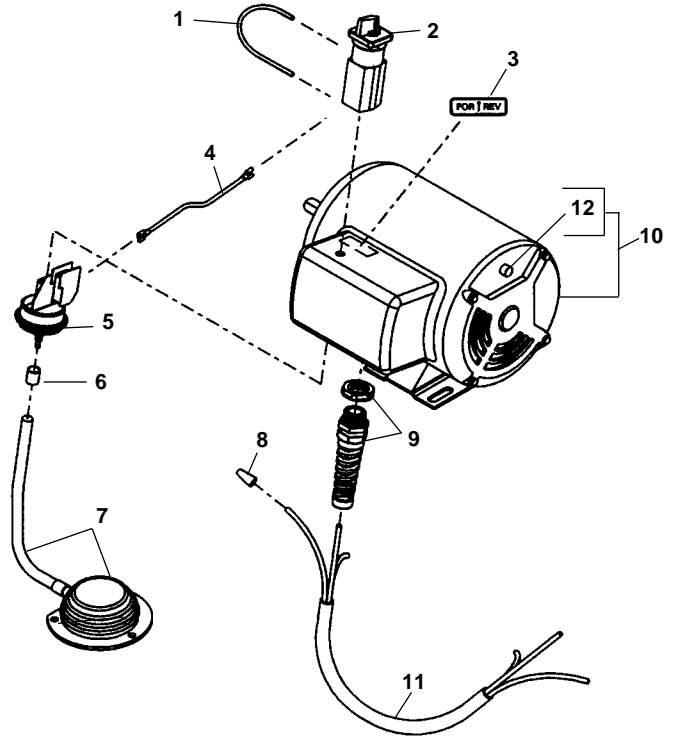
Wiring Diagram



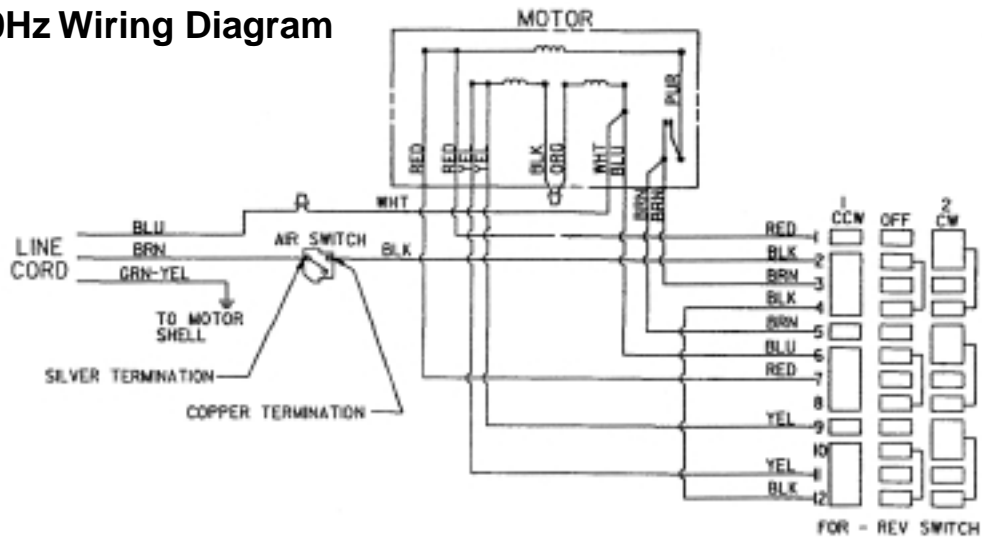
Electrical Components Europe & Australia

NOTE: Order parts by Catalog Number Only.
DO NOT order by Reference Number.

Ref. No.	Catalog No.	Description
1	44882	Jumper Wire Assembly
2	44862	Switch
3	23687	FOR/REV Label
4	44877	Lead Wire Assembly
5	32992	Air Switch
6	35142	Hose Clamp
7	37967	Foot Switch Assembly
8	44635	Wire Nut
9	27187	Strain Relief
10	44712	110/220/240V 50Hz Motor Assy.
11	39562	220V Power Cord (Europe)
	44512	240V Power Cord (Australia)
12	67417	Thermal Overload



220/240V 50Hz Wiring Diagram



110V 50Hz Wiring Diagram

