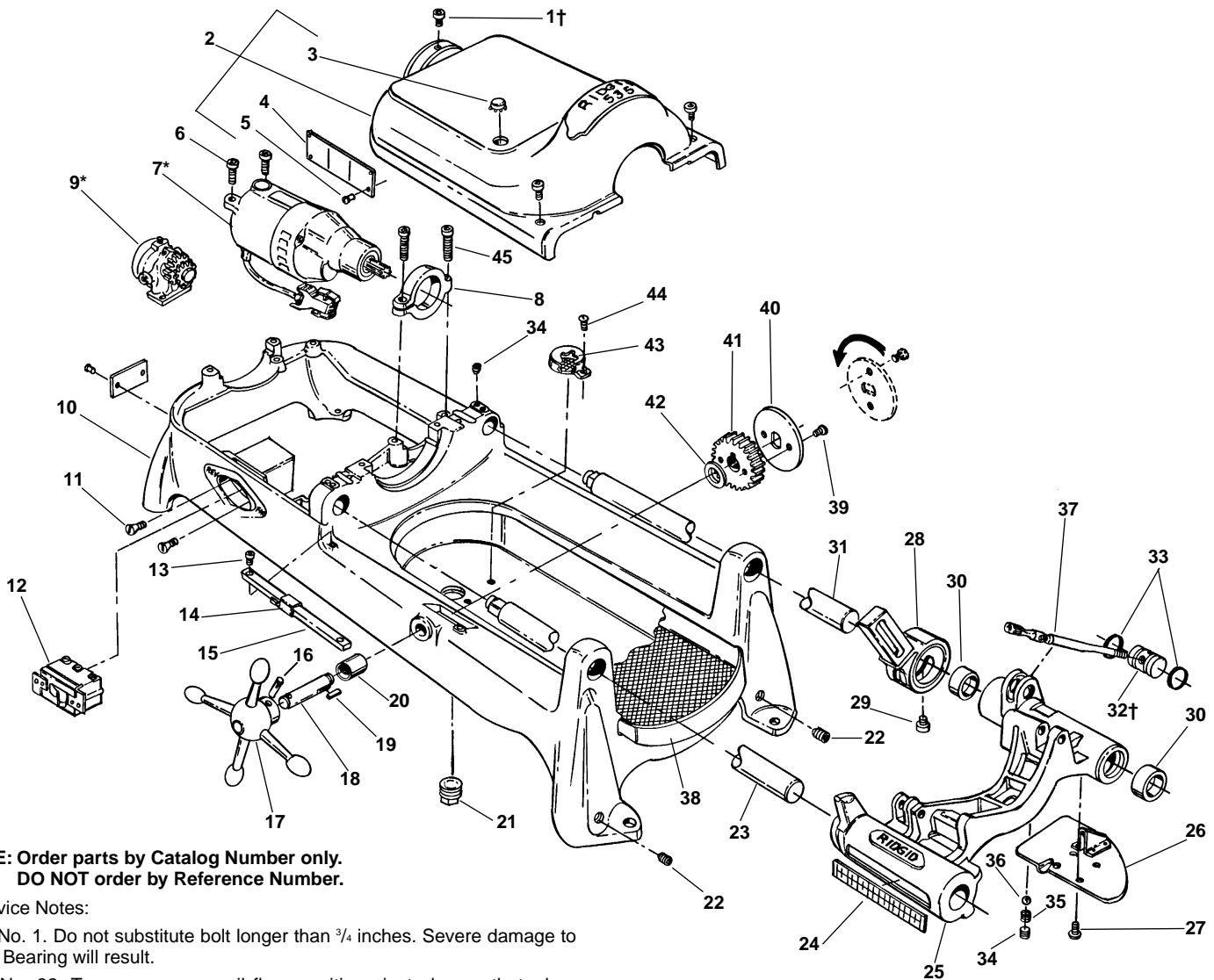


**Main Components – Early Style**



**NOTE: Order parts by Catalog Number only.  
DO NOT order by Reference Number.**

†Service Notes:

Ref. No. 1. Do not substitute bolt longer than 3/4 inches. Severe damage to Rear Bearing will result.

Ref. No. 32. To assure proper oil flow, position pivot plug so that when spout is in up position, oil flow hole is visible in carriage slot below spout.

Ref. No.	Catalog No.	Description	Ref. No.	Catalog No.	Description
1†	46760	E-900 Screw 3/8" - 16 x 3/4" (3)	24	46370	E-591 Scale
2	43190	B-947 Cover (Incls. Ref. No. 3, 4, 5)	25	62057	Carriage Assy. (Includes Ref. Nos. 24, 26, 27, 28, 29, 30, 34, 35, 36)
3	89310	E-3082 Plug Button	26	45195	E-2963 Drip Plate
4	88690	E-1238 Warning Plate	27	46270	E-5228 Screw 1/4" - 20 x 1/2" Pan Head (4)
5	85920	E-10006 Pop Rivet (8)	28	43690	D-224-2 Cutter Arm
6	46745	E-891 Screw 3/8" - 16 x 1 1/4" (2)	29	44930	E-2398 Screw, 5/16" x 3/32"
7*	88125	Motor Model 1177, 115V	30	46720	E-887 Oil Seal (2)
	88165	Motor Model 2377, 230V	31	45220	E-3027 Support Bar - Rear
8	43795	D-400 Motor Bracket	32†	44340	E-1228 Pivot Plug
9*	47195	Model A Oil Pump	33	44470	E-1373 O-Ring (2)
10	43030	B-268X Base (Incls. Ref. No. 20, 21, 22, 44)	34	46800	E-902 Set Screw 3/8" - 16 x 3/8" (3)
11	45280	E-3144 Screw #8-32 x 5/8" Flat Head (2)	35	46680	E-879 Spring
12	44505	E-1417 Switch	36	46925	E-928 Ball
13	45615	E-4251 Screw #10-32 x 1/2" Flat Head (2)	37	44495	E-1409 Oil Spout Assembly
14	47110	F-636 Indicator Slide	38	43355	B-474 Chip Tray
15	47105	F-635 Indicator Bar	39	46785	E-899 Screw #10-32 x 3/8"
16	47165	F-744 Pin	40	47120	F-639 Lock Plate
17	46510	E-632 Handwheel	41	45430	E-354 Pinion
18	47115	F-638 Pinion Shaft	42	47145	F-677 Spacer
19	46930	E-929 Key 3/16" Square	43	46655	E-856-1-X Filter
20	46540	E-666 Bushing	44	45420	E-3467 Screw #10-24 x 3/8"
21	44485	E-1376-1 Drain Plug	45	44220	E-1088 Screw 3/8" - 16 x 1 1/2"
22	42037	Set Screw 1/2" - 13 x 1/2" (4)			
23	45440	E-356-X Support Bar - Front			

\*Refer to Motor Model No./Refer to Model "A" Oil Pump for Component Parts