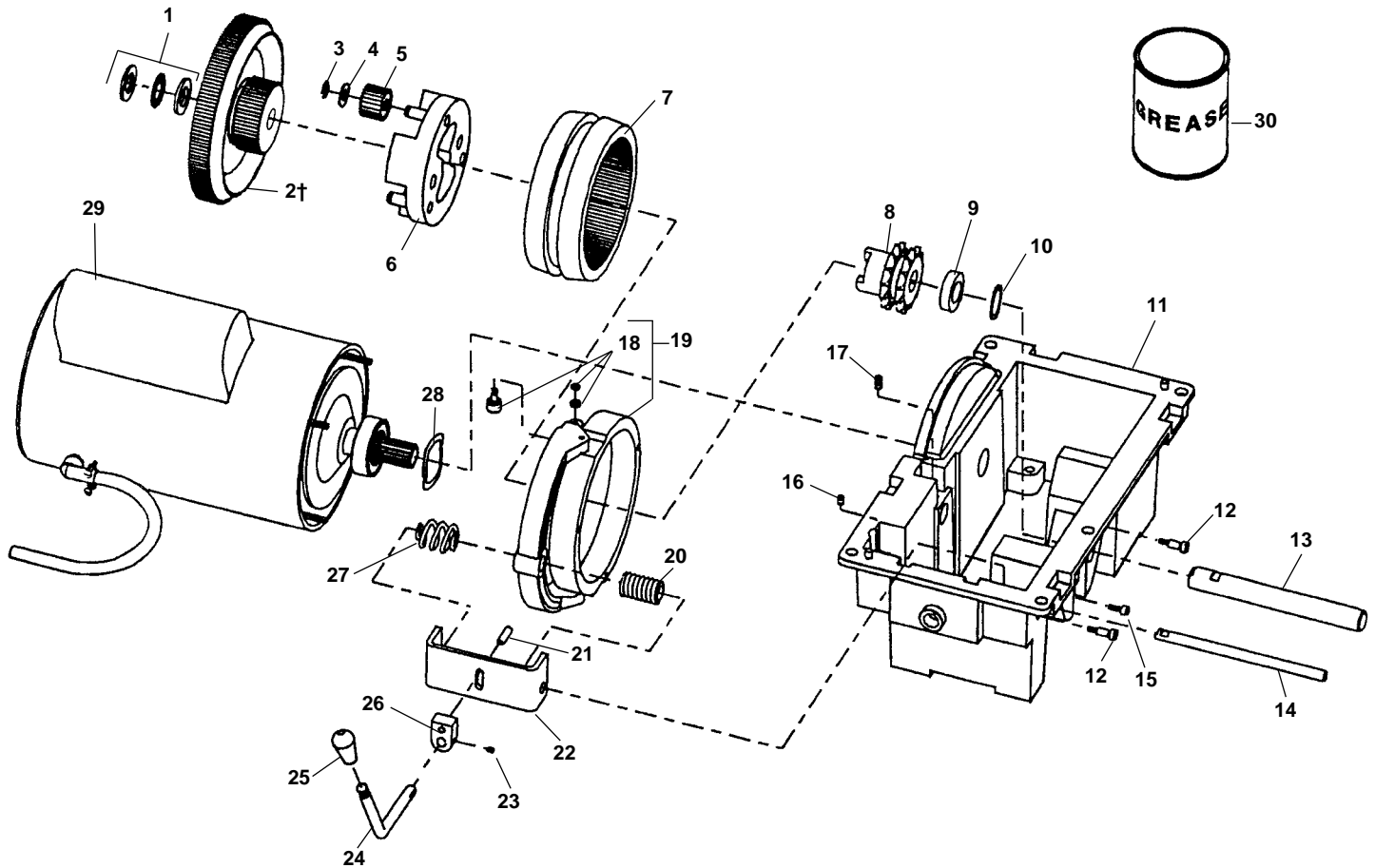


Transmission and Motor – Induction



**NOTE: Order parts by Catalog Number only.
DO NOT order by Reference Number.**

Ref. No.	Catalog No.	Description	Ref. No.	Catalog No.	Description	Ref. No.	Catalog No.	Description
1	41425	Thrust Bearing w/Washer	12	34877	Shoulder Screw 1/4" - 20 x 1/2" (2)	23	34917	Set Screw 10 - 32 x 1/4"
2†	44532	Input Gear 50 Hz	13	34882	Transmission Shaft	24	34927	Shifter Lever
	44537	Input Gear 60 Hz	14	34887	Shifter Shaft	25	34932	Knob
3	34245	Retaining Ring (3)	15	40260	Screw 10 - 24 x 1/2"	26	34922	Pivot Block
4	34792	Washer (3)	16	34897	Set Screw 10 - 32 x 1/4"	27	35362	Barrel Spring
5	34837	Planet Gear (3)	17	34892	Set Screw 1/4" - 20 x 1/2"	28	34942	Wave Washer
6	56822	Planet Gear Spider w/Pins	18	44547	5/8" Cam Roller (2)	29	34947	Motor 120V 60 Hz
7	44527	Internal Ring Gear	19	44542	Stationary Cup Assembly		34952	Motor 240V 60 Hz
8	34862	Output Sprocket	20	34907	Large Spring		34962	Motor 220/240V 50 Hz
9	34867	Thrust Spacer	21	44640	Dowel Pin	30	26707	Transmission Grease 1 lb. (2)
10	68037	Wave Washer	22	34912	Yoke Slide			
11	34872	Transmission Housing						

†Service Note: 60 Hz Input Gear #44537 also used on 40 RPM Denmark and UK Machines.

1822-I Motor Parts

Description	120V 60Hz	240V 60Hz	220/240V 50Hz	110V 50Hz
Dual Contact Start Switch	46772	46772	46772	46772
Start Capacitor	46782	46787	46792	46782
Run Capacitor	46802	46807	46807	46802
Motor Bolts	46812	46812	46812	46812