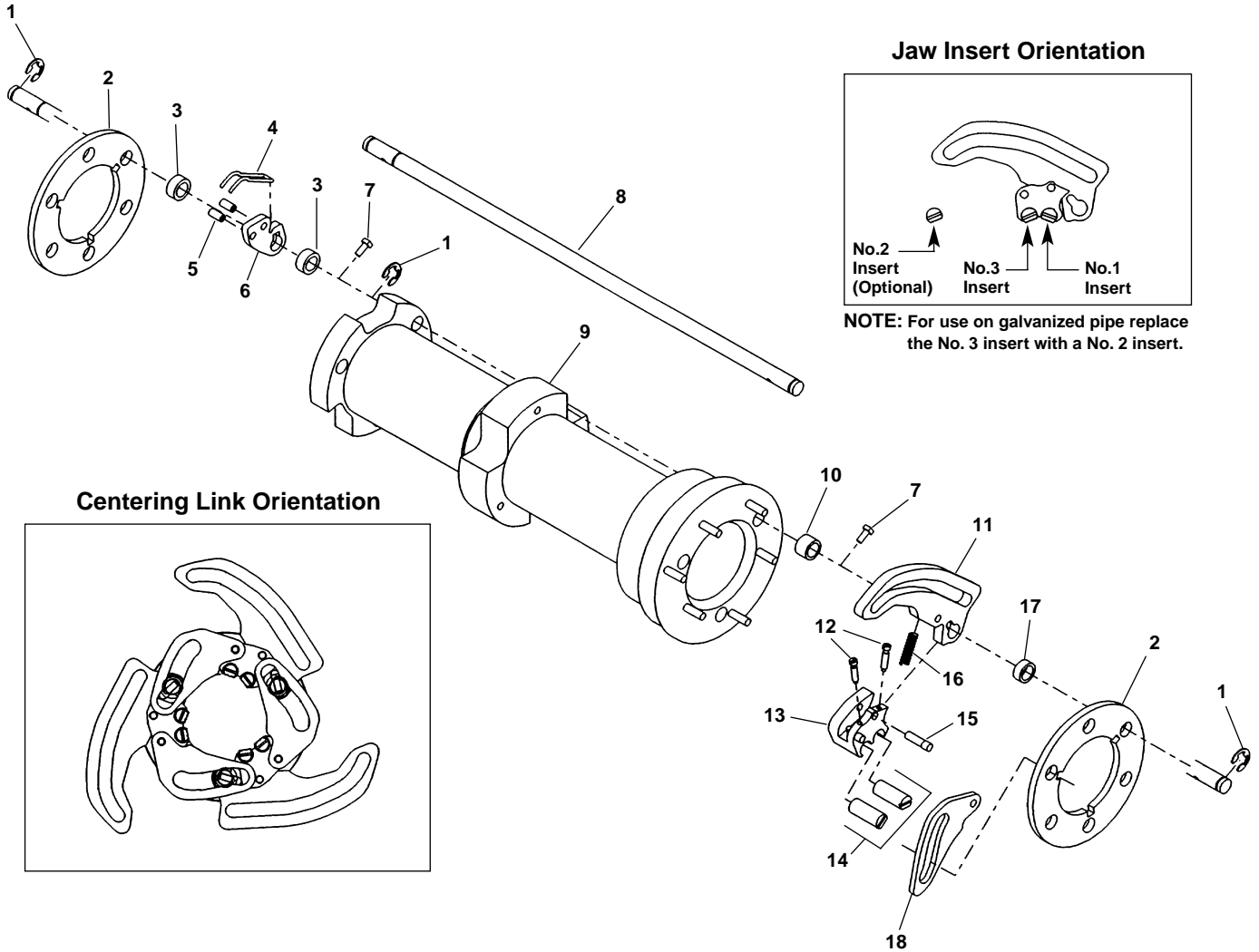


Spindle Assembly For Plastic Coated Pipe



NOTE: For use on galvanized pipe replace the No. 3 insert with a No. 2 insert.

NOTE: Order parts by Catalog Number only.
DO NOT order by Reference Number.

Ref. No.	Catalog No.	Description	Ref. No.	Catalog No.	Description
—	50107	Plastic Coated Pipe Spindle Assembly	10	34787	Large Front Spacer
1	26937	Retaining Clip (9)	11	52977	Jaw (3) (Includes Ref. No.12-16)
2	47497	Pivot Rod Support (2)	12	46642	Jaw Insert Screw (6)
3	34802	Rear Spacer (6)	13	52982	Insert Holder (3)
4	43407	Rear Pick-up Spring (3)	14	43377	Jaw Insert Set (Includes 3 each No.1 & 3 Inserts)
5	34817	Rear Pick-up Spring Pin (6)	15	46647	Jaw Insert Set (No. 2 - Optional f/Galv. Pipe)
6	43412	Rear Jaw (3) (Includes Ref. No. 4 & 5)	16	43402	Insert Holder Pin (3)
7	34762	Pivot Rod Pin (6)	17	52987	Insert Holder (3)
8	34767	Pivot Rod (3)	18	43392	Small Front Spacer (3)
9	61127	Spindle Tube f/P.C.P.		43387	Centering Link (3)