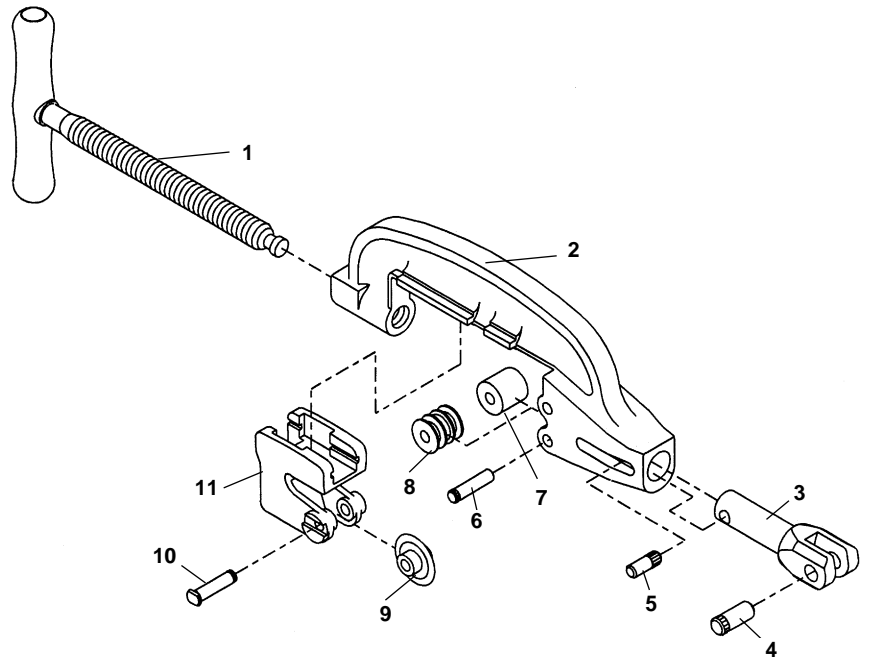


No. 364 Cutter

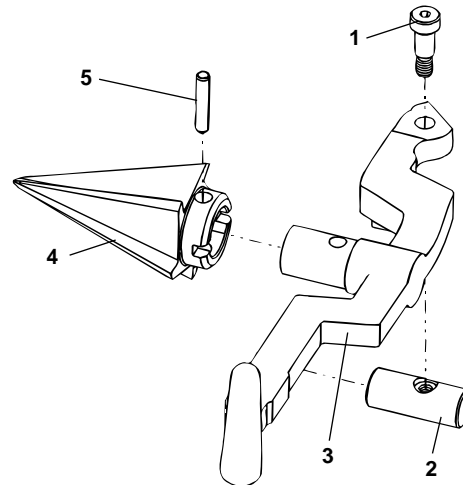
NOTE: Order parts by Catalog Number only.
DO NOT order by Reference Number.

| Ref. No. | Catalog No. | Description |
|----------|-------------|--------------------------|
| — | 34617 | 364 Cutter Complete |
| 1 | 36287 | Feed Screw Handle |
| 2 | 36292 | Cutter Frame |
| 3 | 45505 | Support Arm |
| 4 | 45520 | Hinge Pin |
| 5 | 35317 | Retaining Pin |
| 6 | 46662 | Roll Pin (2) |
| 7 | 46960 | Roll (Steel) (2) |
| 8 | 43682 | Roll Pl. Coated Pipe (2) |
| 9 | 44185 | Cutter Wheel E-1032 |
| 10 | 34780 | Wheel Pin |
| 11 | 36282 | Wheel Housing |



No. 344 Reamer

| Ref. No. | Catalog No. | Description |
|----------|-------------|---------------------------|
| — | 34612 | 344 Reamer Complete |
| 1 | 36262 | Shoulder Screw |
| 2 | 36267 | Pivot Pin |
| 3 | 36272 | Reamer Arm |
| 4 | 36277 | Reamer Core (R.H.) |
| | 46660 | Reamer Core (L.H. & R.H.) |
| 5 | 35355 | Split Roll Pin |



No. 839 Nipple Chuck

| Ref. No. | Catalog No. | Description |
|----------|-------------|---------------------|
| — | 35867 | No. 839 Adapter Kit |
| 1 | 47497 | Pivot Rod Support |
| 2 | 54307 | Drive Screw (6) |
| 3 | 47502 | Roll Pin |
| 4 | 47507 | Tube Assembly |
| 5 | 47512 | Pin, 3/4" x 2 3/4" |

