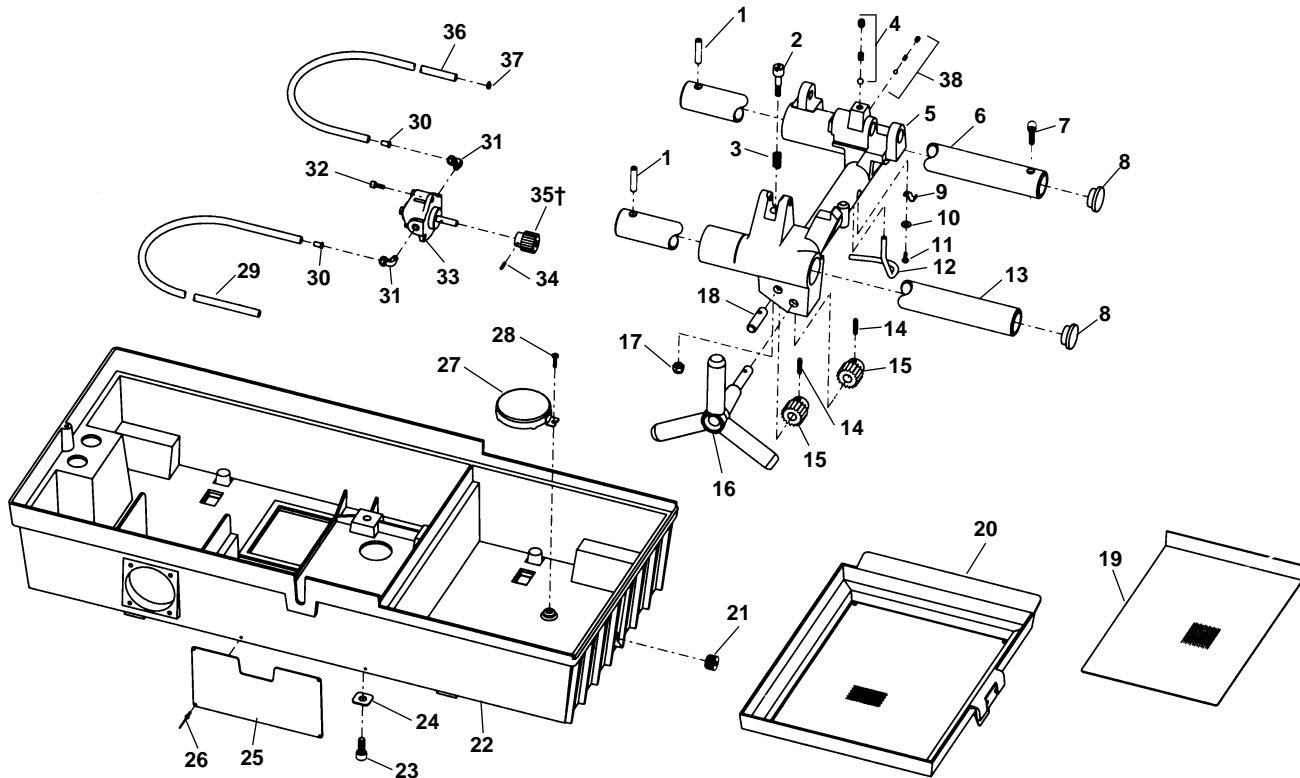


Carriage and Oil System - Induction



**NOTE: Order parts by Catalog Number only.
DO NOT order by Reference Number.**

Ref. No.	Catalog No.	Description	Ref. No.	Catalog No.	Description
1	34375	Rail Pin (2)	22	59747	Base
2	35042	Stop Bolt		59752	Base (1822-IC)
3	35047	Stop Bolt Spring	23	46755	Bolt 3/8" -16 x 7/8" (4)
4	46810	Detente Assembly	24	35107	Square Washer (4)
5	35147	Carriage (Includes 2, 3, 4, 5, 38)	25	36612	Warning Plate 60Hz
6	35057	Rear Rail		35267	Warning Plate 50Hz
7	34425	Screw 5/16" -18 x 3/8"		35312	Warning Plate (40 RPM)
8	35162	Rail Plug (2)	26	35222	Pop Rivet (2)
9	35062	Oil Line Clamp	27	58467	Oil Screen Assembly
10	45365	Washer #10	28	26797	Oil Screen Screw 10-32 x 5/16"
11	79965	Screw 10-32 x 1/2	29	35112	Oil Intake Line 30"
12	35067	Oil Tube	30	35117	Oil Line Insert (2)
13	35167	Front Rail	31	35122	90 Degree Fitting (2)
14	34342	Roll Pin 3/16" x 15/16" (2)	32	32145	Bolt 1/4" - 20 x 1/2" (3)
15	35177	Carriage Pinion (2)	33	39162	Oil Pump
16	35182	Handwheel	34	39820	Pin
17	75110	Stop Nut 5/16" -18	35†	35132	26 T Pump Gear - 50 Hz
18	35187	Pinion Idler Shaft		35197	24 T Pump Gear - 60 Hz
19	35192	Lower Screen	36	35137	Oil Supply Line 40"
20	35097	Draw Tray Assembly	37	35142	Hose Clamp
21	48337	Drain Plug	38	35307	Oil Pressure Relief

†Service Note: 24 Tooth (60Hz) Pump Gear used on 40 RPM Denmark and UK Machines

See 1822 Service Notes