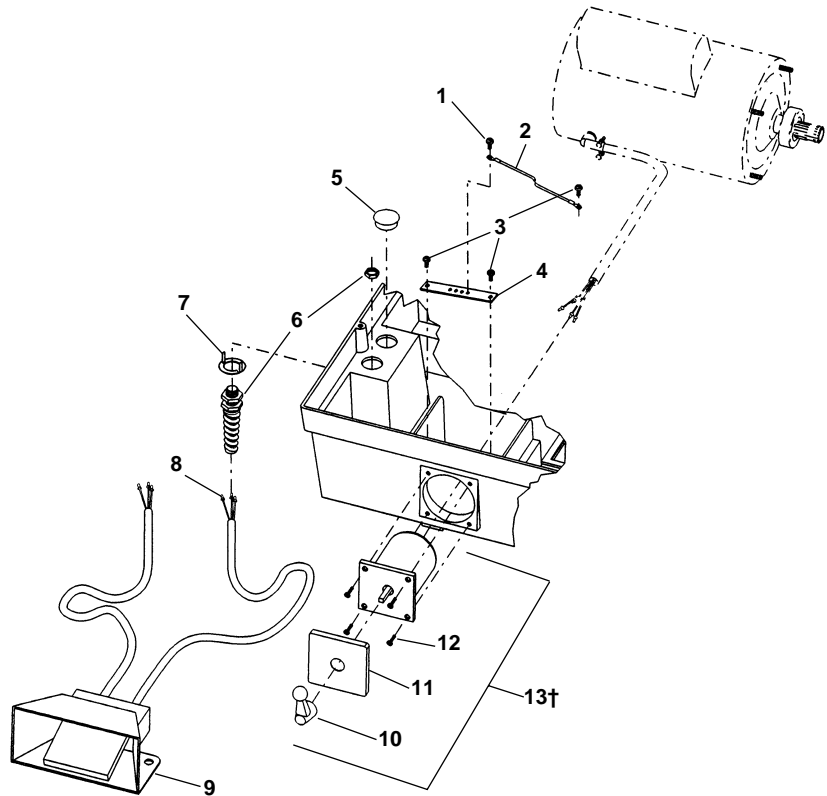


**50 Hz Electrical Components**

**NOTE: Order parts by Catalog Number only.  
DO NOT order by Reference Number.**

Ref. No.	Catalog No.	Description
1	34715	Screw 10-32 x 3/8" (3)
2	33607	Ground Wire
3	45420	Screw 10-24 (4)
4	59732	Ground Strap
5	36252	Hole Plug
6	27187	Strain Relief
7	36247	Hole Adapter
8	44887	Wire Terminal (2)
9	36652	B-296 Foot Switch (220/240V)
	40017	B-298 Foot Switch (110V f/U.K.)
	40022	B-299 Foot Switch (240V f/Australia)
10	59707	Switch Knob
11	59717	Switch Plate (220/240V)
	59737	Switch Plate (110V)
12	45280	Screw 8-32 x 3/4" Fl. Head (4)
13†	59757	Switch Assembly



† Ref. No. 13 – When replacing early style switches, which have a black body, order Switch Kit, Catalog No. 59762. Kit includes 59757 Switch Assembly and 59742 Switch Adapter Plate

**1224 & 1822-I Replacement Switch Wiring Diagram**

