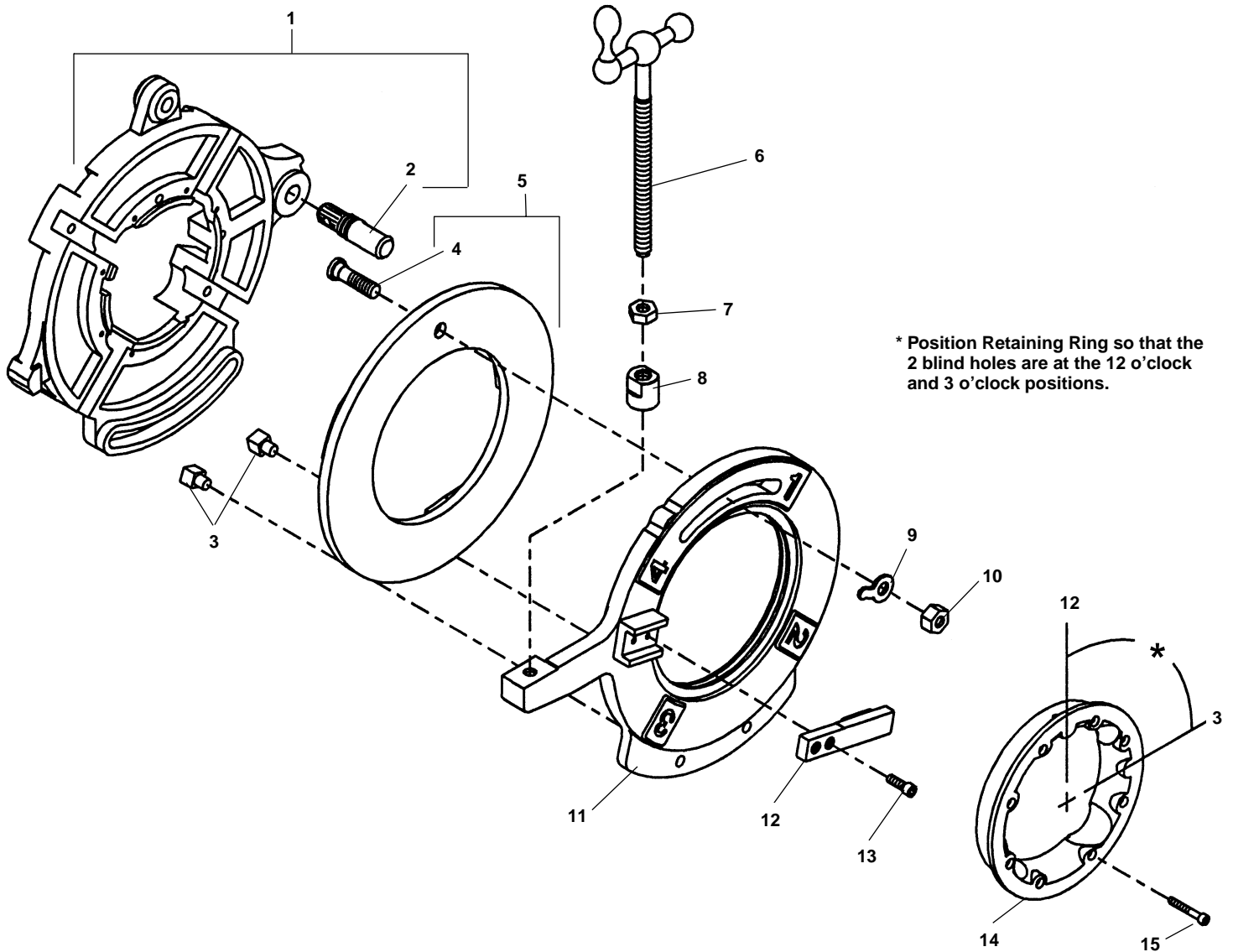


**No. 725 Cut Groove Die Head**



\* Position Retaining Ring so that the 2 blind holes are at the 12 o'clock and 3 o'clock positions.

**NOTE: Order parts by Catalog Number only.  
DO NOT order by Reference Number.**

Ref. No.	Catalog No.	Description
—	55447	725 Grooving Die Head
1	58687	Die Head With Post
2	59827	Die Head post
3	26632	Drive Block
4	26952	Cam Assembly
5	33227	Cam Bolt
6	58692	Feed Screw Assembly
7	44745	Jam Nut
8	58697	Adjusting Nut
9	26957	Lever Washer
10	26887	Hex Nut 7/16" - 20
11	58702	Cam Locking Plate
12	58707	Stop
13	40910	Screw #1/2 - 20 x 3/4" (2)
14	26637	Retaining Ring
15	26642	Screw #10 - 32 x 1 3/8" (8)